

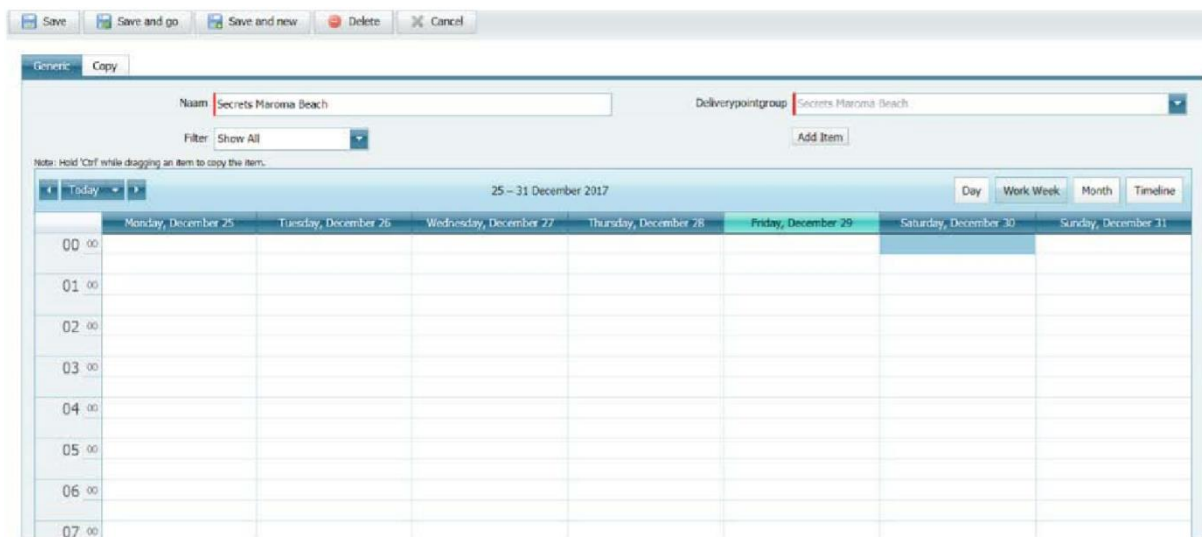
Add Homescreen To Schedule Guidebook



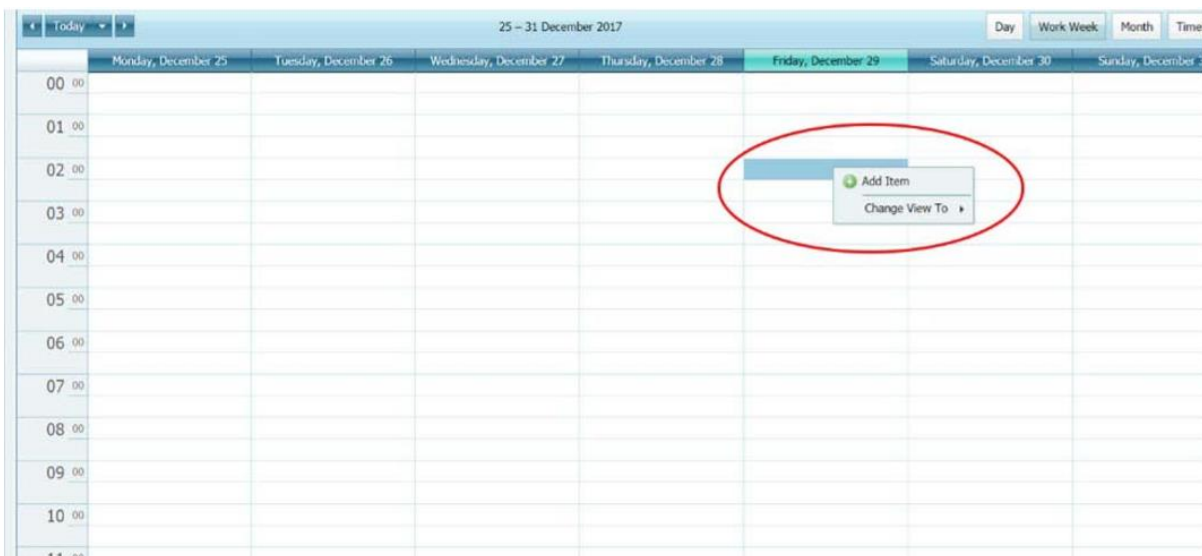
Study Material
Crave Interactive

Add A Homescreen Advert/Image To The Marketing Schedule

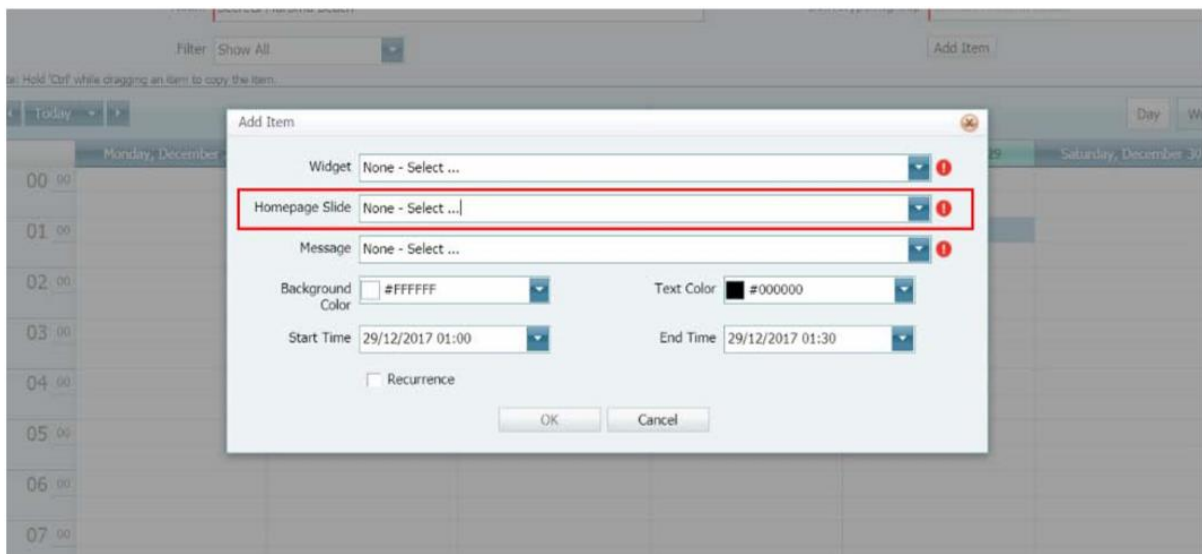
1. Go to Company - Marketing Schedules. Double click on the relevant schedule, This will bring up the following screen:



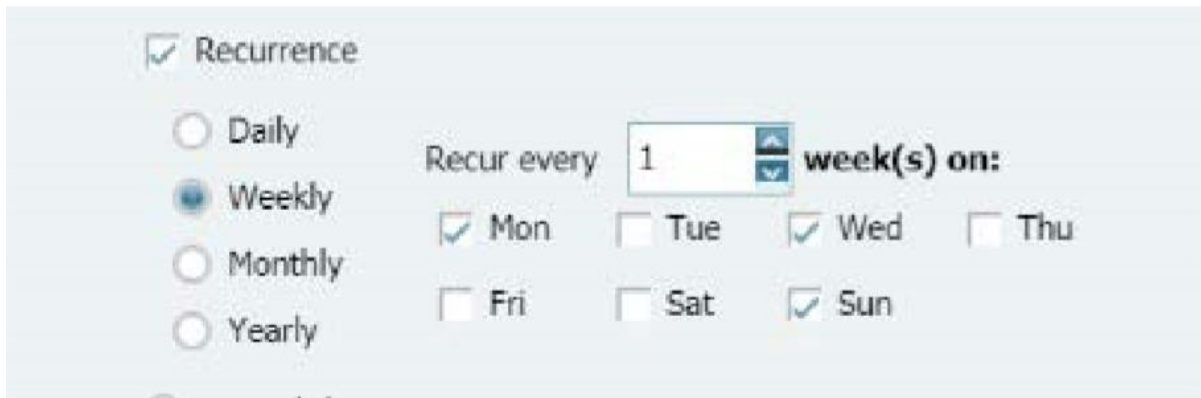
2. Right-click on the day you would like the homescreen to display. You can filter this by your preference for a Day/ Week/ Month/ Timeline then select add item.



3. From the Homepage Slide drop-down box, select the home screen image.



4. Select "Start Time" select the date/time you would like the homescreen to display from and "End Time" to select the date/time you would like the homescreen to end
NB: If you would like the home screen to reoccur on certain days; tick the Recurrence box. Here you will have the option to display your image on certain days of the week, month and so on.



Recurrence

Daily

Weekly

Monthly

Yearly

Recur every week(s) on:

Mon Tue Wed Thu

Fri Sat Sun

5. If you would like your homescreen to appear infinitely and with no end date set the Start Time/End time to:

- Start Time: Today's Date 0:00
- End Time: Tomorrow's Date 0:00
- Tick the Recurrence box
- Select "Daily" and "No End Date"

NB: Once you have configured your homescreen on the marketing schedule it will be visible